

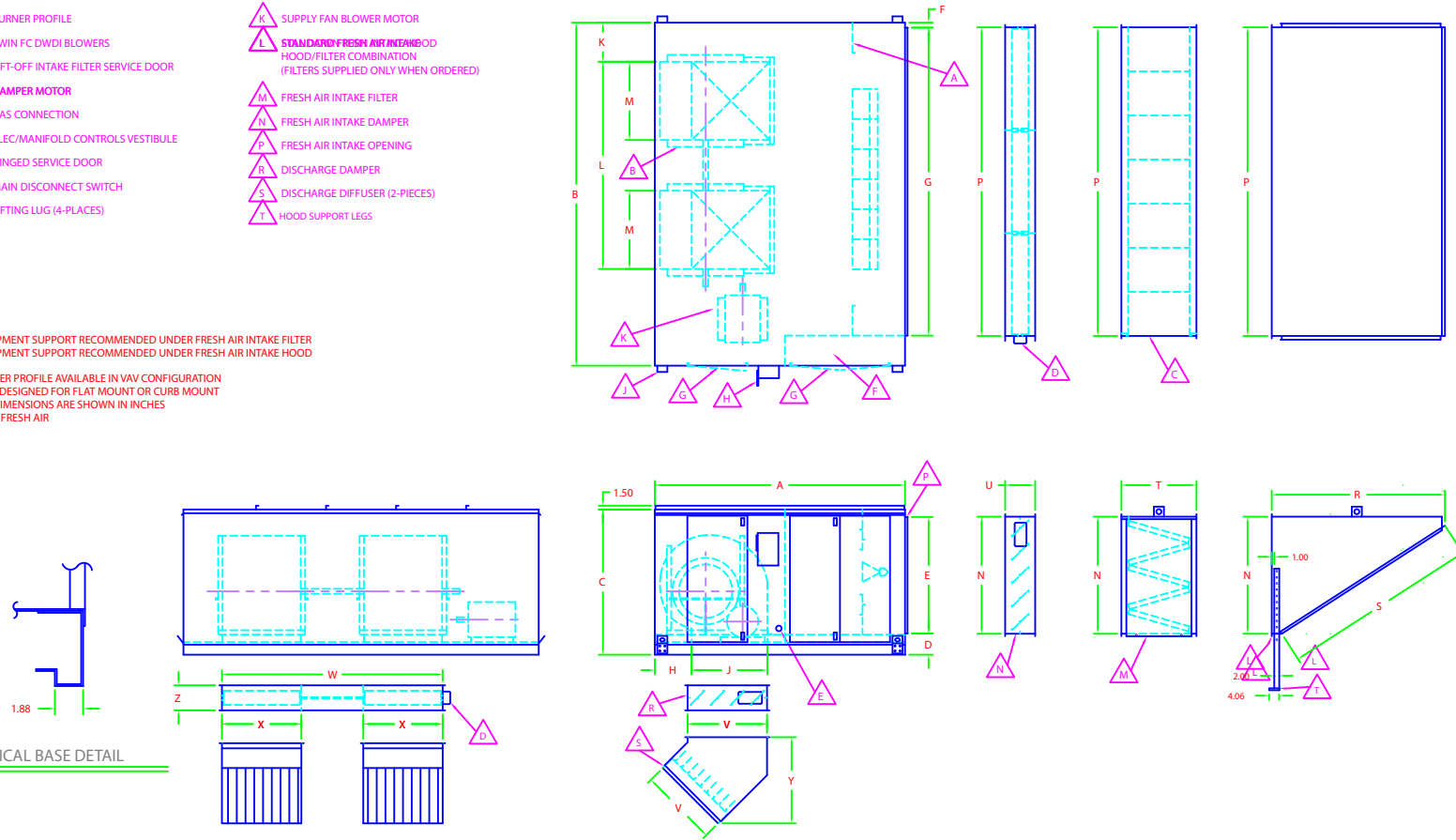
| MODEL NO | A | B | C | D | E | F | G | H | J | K | L | M | N | P | R | S | T | U | V | W | X | Y | Z | **FA FILTER QUANTITY | **FA FILTER/HOOD QUANTITY |
|----------|-----|-----|----|------|------|---|-----|-------|------|------|-----|------|-------|--------|------|----|----|----|-------|--------|-------|----|----|-------------------------|---------------------------|
| 222 | 100 | 146 | 58 | 8.5 | 46.5 | 2 | 140 | 20.31 | 27.5 | 19.5 | 77 | 27.5 | 46.75 | 140.25 | 69.5 | 76 | 28 | 10 | 27.75 | 77.25 | 27.75 | 24 | 10 | (20)20"x25"8(8)16"x25" | (2)120"x25" |
| 225 | 100 | 146 | 58 | 8.5 | 46.5 | 2 | 140 | 21.75 | 31.5 | 15.5 | 88 | 31.5 | 46.75 | 140.25 | 69.5 | 76 | 28 | 10 | 31.75 | 88.25 | 31.75 | 24 | 10 | (20)20"x25"8(8)16"x25" | (2)120"x25" |
| 227 | 100 | 156 | 66 | 10.5 | 52.5 | 2 | 152 | 23 | 34.5 | 19.5 | 96 | 34.5 | 52.75 | 152.25 | 64 | 72 | 28 | 10 | 34.75 | 96.25 | 34.75 | 24 | 10 | (30)20"x25"8(10)16"x25" | - |
| 230 | 100 | 156 | 66 | 10.5 | 52.5 | 2 | 152 | 24.88 | 37 | 15.5 | 104 | 37 | 52.75 | 152.25 | 64 | 72 | 28 | 10 | 37.25 | 104.25 | 37.25 | 24 | 10 | (30)20"x25"8(10)16"x25" | - |

Rev 06/25/14
30400035

- | | |
|--|--|
| △ A BURNER PROFILE | △ K SUPPLY FAN BLOWER MOTOR |
| △ B TWIN FC DWDI BLOWERS | △ L STANDARD FRESH AIR INTAKE HOOD |
| △ C LIFT-OFF INTAKE FILTER SERVICE DOOR | △ L HOOD/FILTER COMBINATION (FILTERS SUPPLIED ONLY WHEN ORDERED) |
| △ D DAMPER MOTOR | △ M FRESH AIR INTAKE FILTER |
| △ E GAS CONNECTION | △ M FRESH AIR INTAKE DAMPER |
| △ F ELEC/MANIFOLD CONTROLS VESTIBULE | △ P FRESH AIR INTAKE OPENING |
| △ G HINGED SERVICE DOOR | △ R DISCHARGE DAMPER |
| △ H MAIN DISCONNECT SWITCH | △ S DISCHARGE DIFFUSER (2-PIECES) |
| △ I LIFTING LUG (4-PLACES) | △ T HOOD SUPPORT LEGS |

NOTES:

- EQUIPMENT SUPPORT RECOMMENDED UNDER FRESH AIR INTAKE FILTER
- EQUIPMENT SUPPORT RECOMMENDED UNDER FRESH AIR INTAKE HOOD
- BURNER PROFILE AVAILABLE IN VAV CONFIGURATION
- BASE DESIGNED FOR FLAT MOUNT OR CURB MOUNT
- ALL DIMENSIONS ARE SHOWN IN INCHES
- **FA : FRESH AIR



| | | | | | |
|-----------------------------------|----------------------|---|-------------|---|------|
| DRAWING NUMBER H22230DDRL | | DATE | DATE | TOLERANCES 2 PLCS ±.03 3 PLCS ±.015 | |
| REVISION | REVISION DESCRIPTION | DATE | | TITLE HORIZONTAL-222, 225, 227 AND 230 DOWN DISCHARGE RIGHT TO LEFT | |
| DRAWN BY TKL | | DATE 02/10/00 | APPROVED BY | | DATE |
| MATERIAL SCALE | | DO NOT SCALE DRAWINGS USE DIMENSIONS SHOWN ALL DIMENSIONS ARE IN INCHES UNLESS OTHERWISE SPECIFIED | | | |
| DRAWING/PART NUMBER H22230DDRL | | | | | |